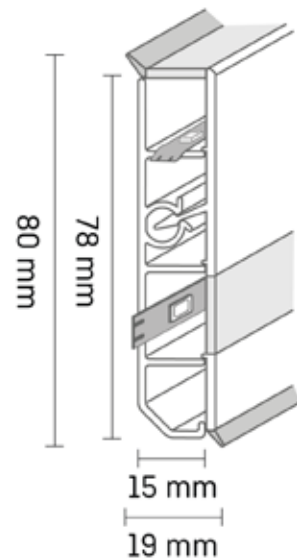


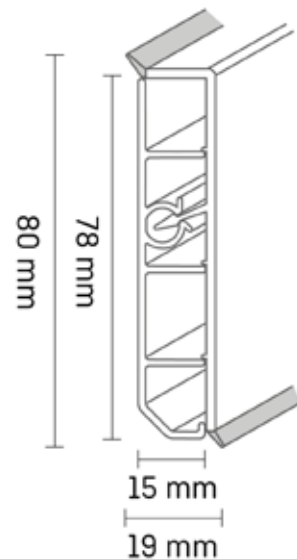
# Technical data sheet

## Cubica Light System 80

Combined light /  
Cable channel strip for all  
types of flooring



Base and decorative profile,  
incl. LED strip (light up or  
light down possible)



Base and decorative profile,  
without LED strip (No light)



Combined light / cable duct strip suitable for all types of flooring. Whether as a light accent for a feel-good atmosphere in your own four walls or as a security solution for hotels, ships or healthcare facilities - the Cubica Light System is the highest quality and most flexible lighting solution on the market.

### Product benefits



quick assembly



Plug & Play



Smart home ready



Product configurator for individual projects

- High-quality LED strip with even light distribution, without visible light points
- Can be shortened individually to the desired length (can be shortened every 5 cm)
- Easy assembly without prior knowledge and without additional tools
- Use as a cable channel bar or as a combined light and cable channel bar
- Plug & Play - plug it together and turn on the light!
- Smart home ready (integration into existing system possible)
- Ready-made starterset with all the necessary components
- Can be combined with Cubu flex life XL 80 (same decors and geometry)
- In addition to the standard packages, we also offer to accompany and pre-assemble individual projects! (Assembly of all required lengths and components using our product configurator)

### Material

[Basic profile] Made of polyblend based on PVC

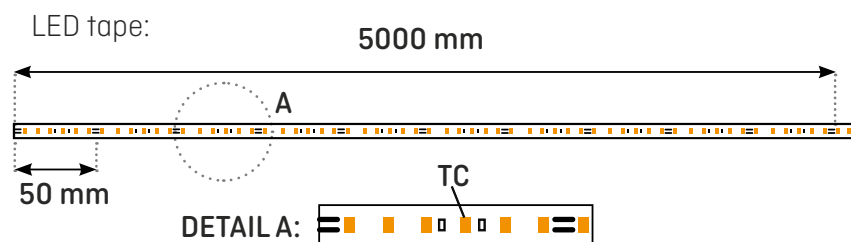
[Cover profile] Made of polyblend based on PVC with flexible soft lips on the wall and floor

- 2 parts for quick and easy processing
- Compensation of the unevenness through the soft lips to the wall and ground

[LED strip] Flexible LED strips - Made in Europe

- Long life time: > 50,000 hours.
- Low tolerances in color temperature: Binning according to MacAdam Step 3
- Conformity according to CE

**i**  
We will be happy to provide you with further technical information on the LED strip on request!

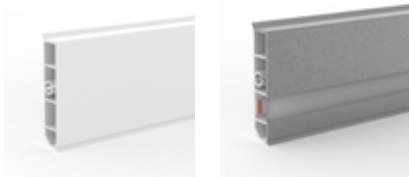


You can find the processing video with tips from professionals and the product configurator at [cubica-light.de](http://cubica-light.de)!



Individual project?  
You can find our product  
configurator and further  
information online at:  
[www.cubica-light.de](http://www.cubica-light.de)

## Delivery form

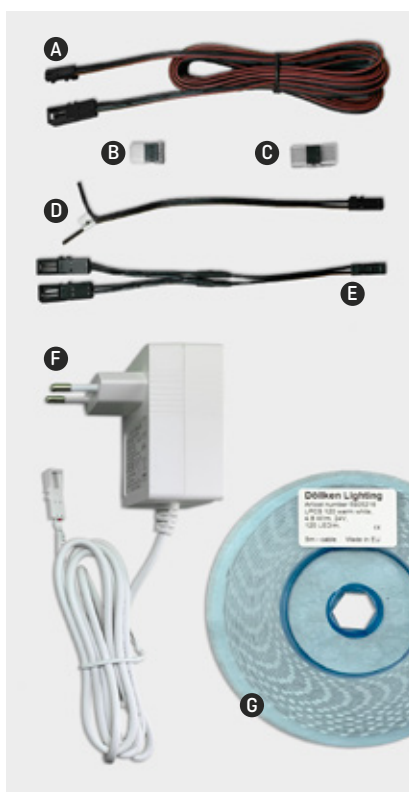


No light

Light down



Light up



Starter set



Control set

Sales unit:

[Basic profile] 1 pack = 10 x 2.5 m

[Cover profile] 1 pack = 10 x 2.5 m

Base profile, cover profile and the required starter kit must be ordered separately.

### Cover profile available in three different versions:

- ✓ No light (without light - cable duct strip)
- ✓ Light down (light below)
- ✓ Light up (light above)

**Starter set** (Suitable for 5 m LED tape): (A) Extension cable, (B) Connector (LED tape to cable), (C) Connector (LED tape to LED tape), (D) LED connection cable, (E) Y-distribution cable, (F) power supply (transformer for 230 V socket), (G) LED-tape  
> **Additionally available: control set:** (H) radio plug, (I) radio switch

	Color/ variant	Item number
<b>Base profile</b>	white	5122899
<b>Cover profile No light</b>	white	5122900
	champagne	5122958
	aluminium	5122962
	anthracite	5124322
<b>Cover profile Light up</b>	white	5122956
	champagne	5122960
	aluminium	5122964
	anthracite	5124323
<b>Cover profile Light down</b>	white	5122901
	champagne	5122959
	aluminium	5122963
	anthracite	5124321
<b>Starter set</b>		5124397
<b>Control set</b>		5124398

**Packaging:** Cardboard packaging sealed with adhesive tape and VE paper labels with article labeling

**Storage:** Store flat, dry and protected from the weather

## Accessories

**Inside corner, outside corner, connector:** 1 PU = 5 x 1 piece

**End caps:** 1 PU = 5 x 2 pieces



Internal corner



External corner



Connector



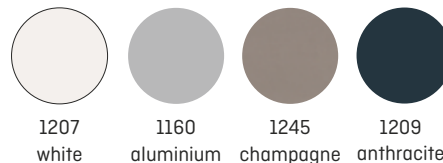
Endcaps left and right

**Colours**  
1207 white  
1160 aluminium  
1245 champagne  
1209 anthracite

Moldings	Color	Item number
<b>Internal corner</b>	white	5122902
	champagne	5122966
	aluminium	5122967
	anthracite	5124325
<b>External corner</b>	white	5122903
	champagne	5122968
	aluminium	5122969
	anthracite	5124326
<b>Connector</b>	white	5122904
	champagne	5122970
	aluminium	5122973
	anthracite	5124327
<b>Endcaps (left and right)</b>	white	5122906
	champagne	5122971
	aluminium	5122972
	anthracite	5124328

## Colours

Special colors are possible on request.



1207 white

1160 aluminium

1245 champagne

1209 anthracite

## Installation recommendation



Mitre saw



Skirting scissors



Screws



Döllken hot melt adhesive system



Slotted screwdriver



Side cutter or electrician's pliers

In order to avoid material breaks and difficult processing, the optimal processing temperature between 15 ° C and 30 ° C should be maintained.

### Important!

The base profile is installed by screwing or gluing. Subtract the following measurements from the total length:

Inside corner: 0 to 16 mm, end cap / outside corner: 0 to 4 mm.

We recommend using a standard cross-cut and miter saw with a fine saw blade for cutting. If you want to glue the skirting board, we recommend the Döllken hot melt adhesive system. The corner formation and the endings are made with the appropriate accessories for inside corners, outside corners, connectors and end caps.

These are simply attached to the cover profile during assembly.

The LED strip is glued in before the cover profile is clicked on.

You can find more information in the processing instructions online at [www.cubica-light.de](http://www.cubica-light.de).

## Special features / notes

### Specifications of the LED tape

Color temperature	2700K
Current, A / m	~ 0.2
Voltage, V	24 VDC
Power, W / m	~ 4.8
LED quantity, piece	120
Luminous flux, Lm / m	530 [2700K]
Color rendering index, CRI	> 80
Light angle	120 °
Ambient temperature [Ta]	-30 ° to + 65 °
Operating temperature [Tc]	Max. 35 ° C
PCB type (printed circuit board)	FLEX
packaging	5 meters

## Certificates

### Skirting board



### LED tape



## Cleaning and maintenance

[Skirting board] Clean the slightly soiled surface with a damp cloth. Use a commercially available household cleaning agent for heavier soiling and observe the information in the dosing instructions of the respective manufacturer. You should avoid detergents with abrasive, acidic, or bleaching ingredients. Do not use abrasive household sponges.

[LED tape] Only use a dry, lint-free cloth for cleaning - do not use water as this is an unprotected conductor film. Cleaning the LED strip and its components when the power supply is available can lead to dangerous situations. Always pull the power plug out of the socket before cleaning.

Corrosive and abrasive cleaning agents can damage the LED strip and its components.

## Underground

The surface must be permanently dry, hard, stable, flat, free of grease, dust and silicone.

## Disposal

**20 01 39 plastics recommendation:** In compliance with the necessary technical regulations, it can be disposed of with household waste or burned with household waste after consultation with the disposal company and the responsible authority.

**15 01 01 paper and cardboard packaging:** Completely emptied packaging can be recycled.

**The lights and electrical devices offered may not be disposed of with household waste.**

**WEEE reg. No. DE 41380720 Döllken Lighting Flex Line**

**20 01 36** Used electrical and electronic equipment  
LED tape and power supply

**16 06 05** Batteries



**Batteries and rechargeable batteries are not household waste.**



The current version of this data sheet can be found on our website at [www.doellken-weimar.de](http://www.doellken-weimar.de)

This information and technical information have been created on the basis of our experience and the latest technology. However, they can only be general information without assurance of properties, as we have no influence on the site conditions, on the execution of the work and the processing. The relevant recommendations, guidelines and DIN regulations as well as processing recommendations for the materials used must be observed. In case of doubt, carry out your own tests or get technical advice. With the appearance of this product data sheet, all previous product data sheets lose their validity.